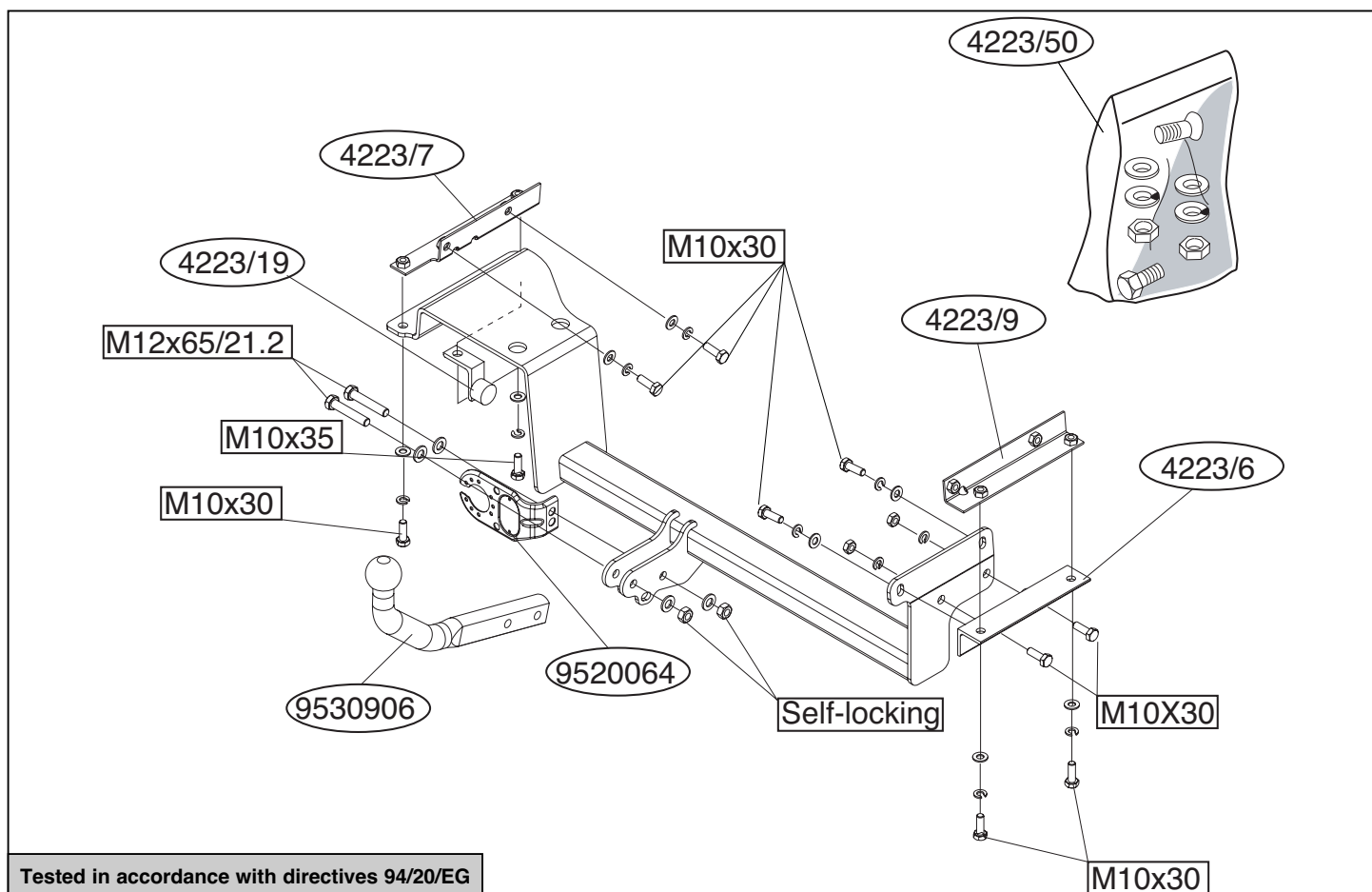
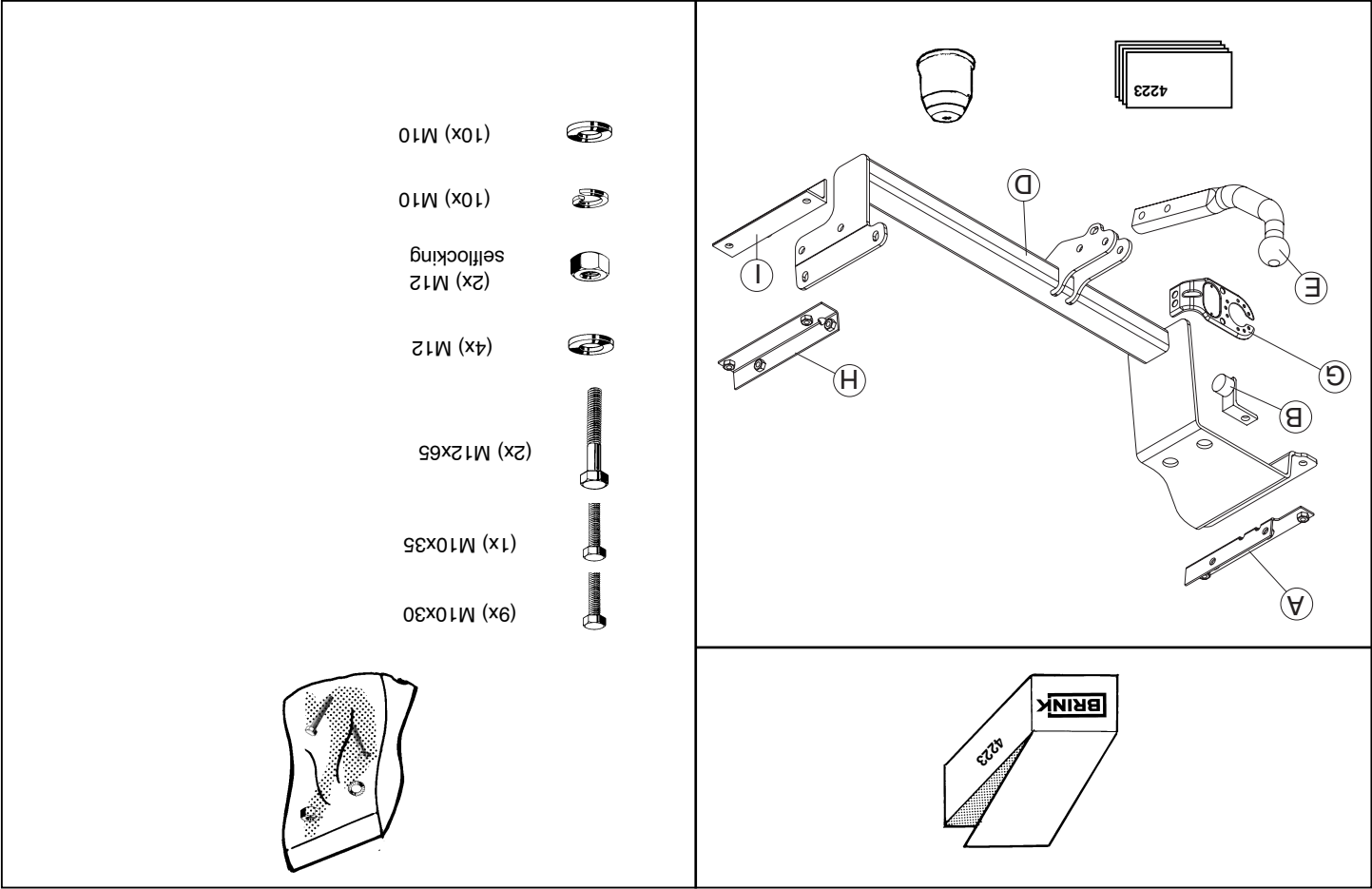


Fitting instructions
Make: Nissan
Micra; 2003->
Type: 4223

Permanently
linked to
quality



© 422370/27-06-2005/1



DA COMPILARE PER IL COLLAUDO

DICHIARAZIONE DI CORRETTO MONTAGGIO: la sottoscritta Ditta dichiara di aver montato in maniera corretta ed in conformità alle prescrizioni sia del costruttore del veicolo che del costruttore del dispositivo stesso il seguente dispositivo di attacco meccanico:

Si dichiara inoltre di aver informato l'utente del veicolo sull'USO e MANUTENZIONE del dispositivo stesso.

tipo:.....
Il dispositivo di attacco sopra indicato è stato installato su autoveicolo
modello:.....
targa:.....
Data:.....

Per verificare l'idoneità del dispositivo di traino omologato a norma CEE 94/20, all'installazione sulla vettura su cui si intende procedere al montaggio, compilare la seguente formula (se necessario)

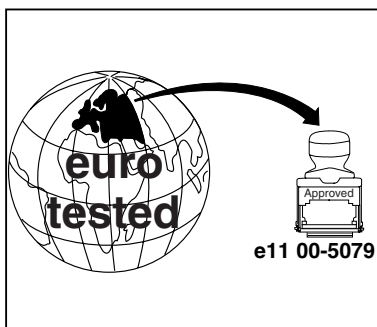
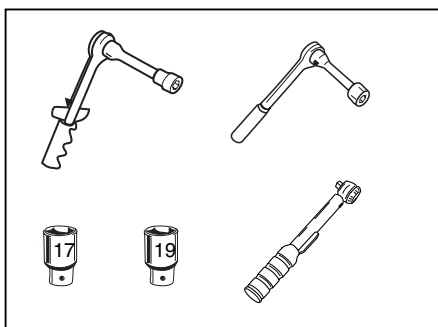
$$D = \frac{T \times C}{T + C} \times 0,00981 = \dots\dots\dots \text{KN}$$

dove: T= Massa Complessiva Max. della motrice (in kg)
C= Massa Rimorchiabile Max. della motrice (in kg)

declassare la massa rimorchiabile):

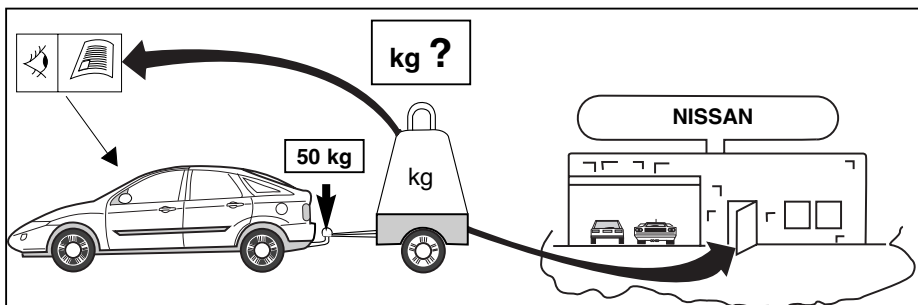
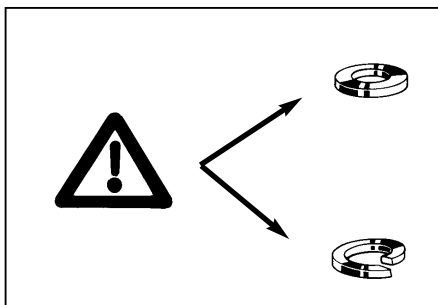
Classe e tipo di attacco: A50-X
Omologazione: e11 00-5079
Valore D: 5,60 kN
Carico Verticale max. S: 50 kg
Larghezza rimorchiabile per Caravan e T.A.T.S.: 2,45m vedere CARTA di CIRCOLAZIONE VEICOLO (motrice) + 70 cm = ..arrotondare ai 5 cm superiore (vedi D.M.28/05/85)
Massa rimorchiabile: vedi carta di circolazione dell' autoveicolo

Dispositivo di traino tipo: P.C. Brink 4223
Per autoveicoli: Nissan Micra; 2003->
Tipo funzionale:

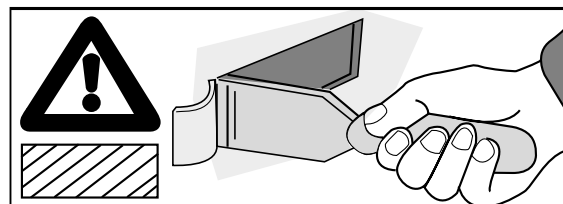


D-value

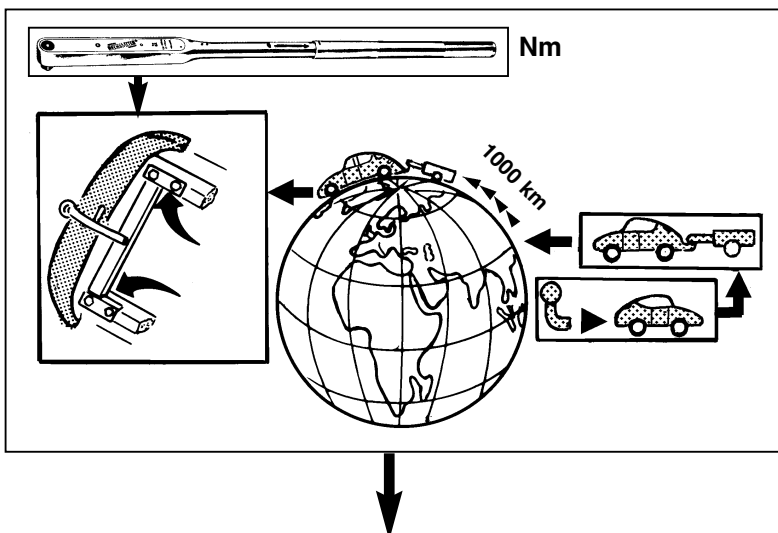
$$D = \frac{1500 \text{ kg} \times 950 \text{ kg} \times 9.81}{1000} = 5.60 \text{ kN}$$



See Workshop Manual section Body and Trim
 Voir Manuel d'atelier section Carrosserie et draper
 Siehe Werkstatthandbuch Bereich Unterbau/Rahmengruppe
 - Ausschnitt
 Se Verkstadsmanualen under kapitlet kaross och inredning.
 Zie werkplaatshandboek sectie Carrosserie & bekleding
 Ver manual de taller sección Carrocería e Interiores
 Consultare la sezione relativa a Carrozzeria e Interni del
 manuale di manutenzione.

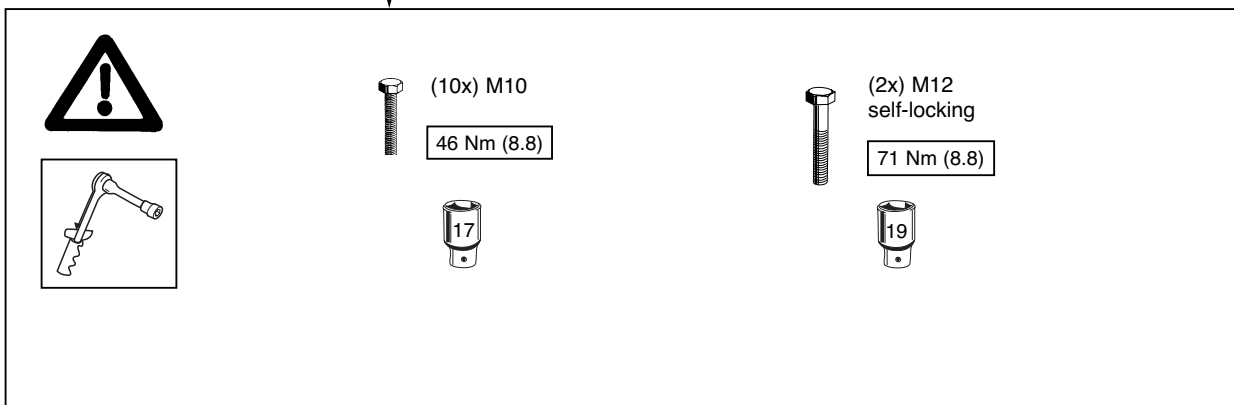


© 422370/27-06-2005/3

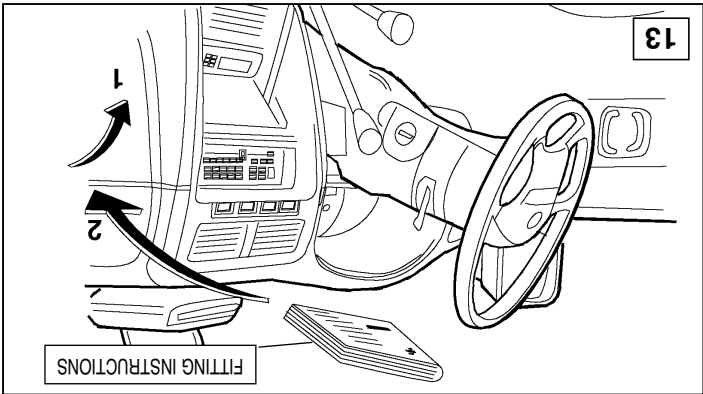
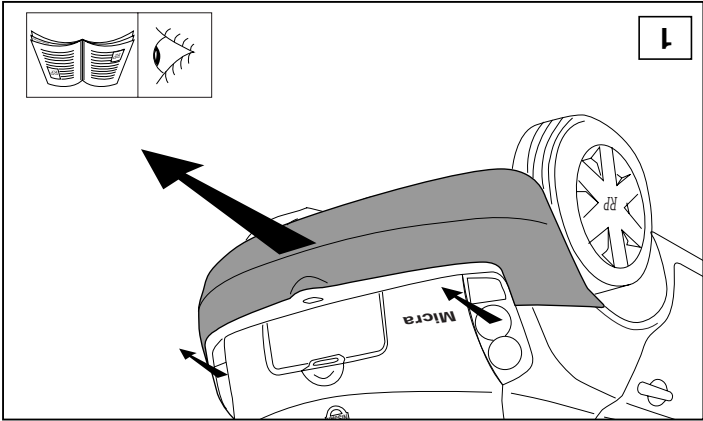
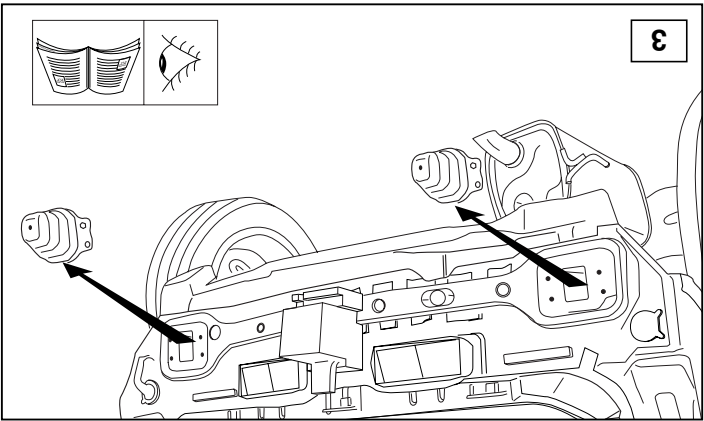
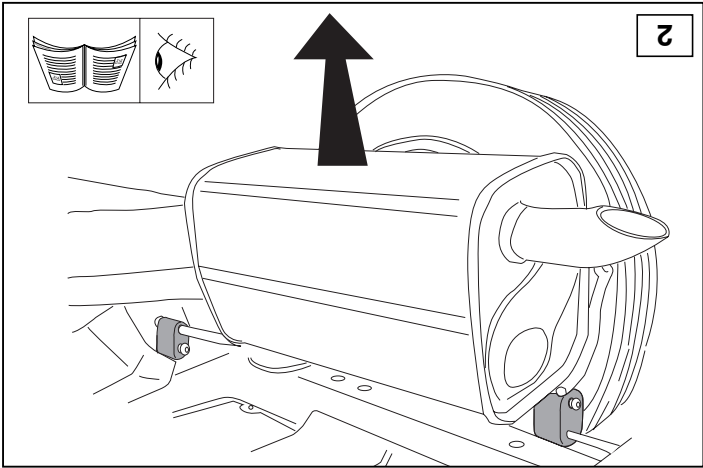
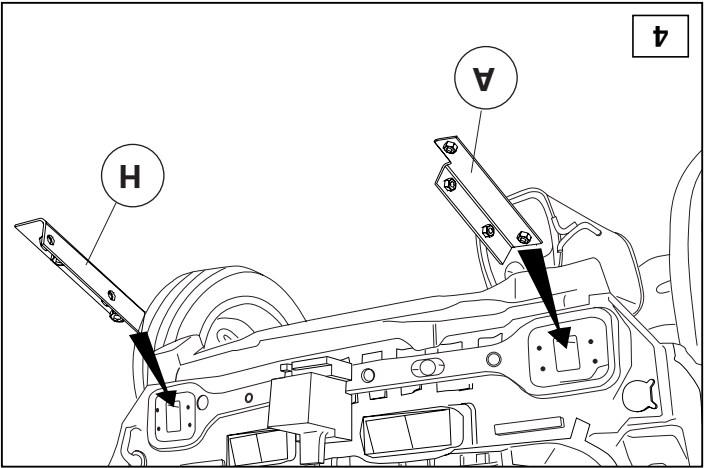


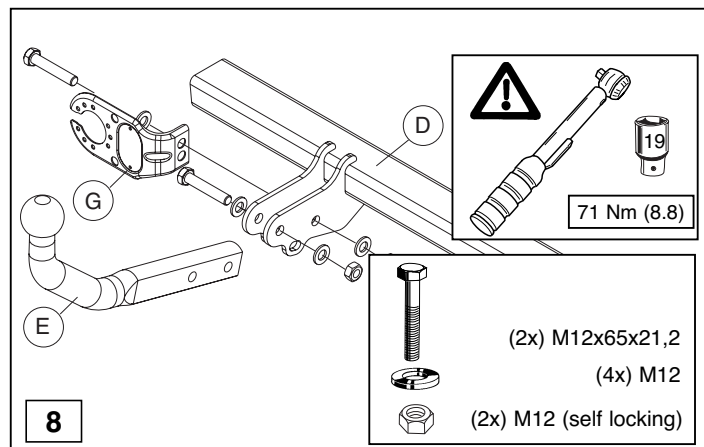
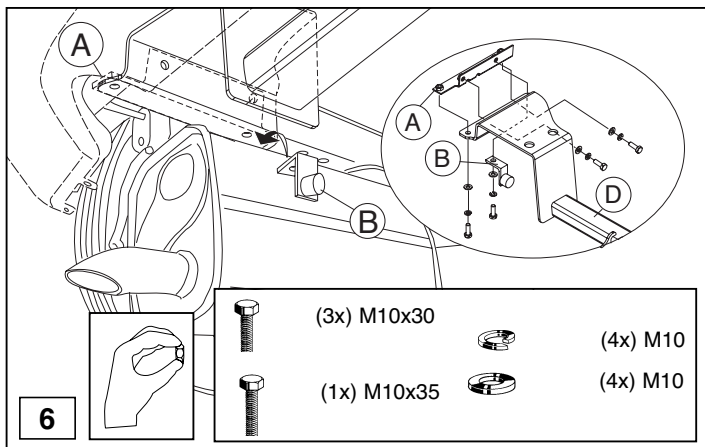
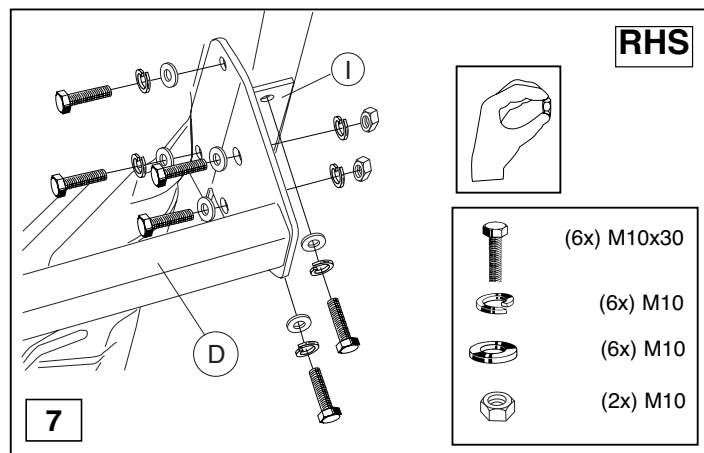
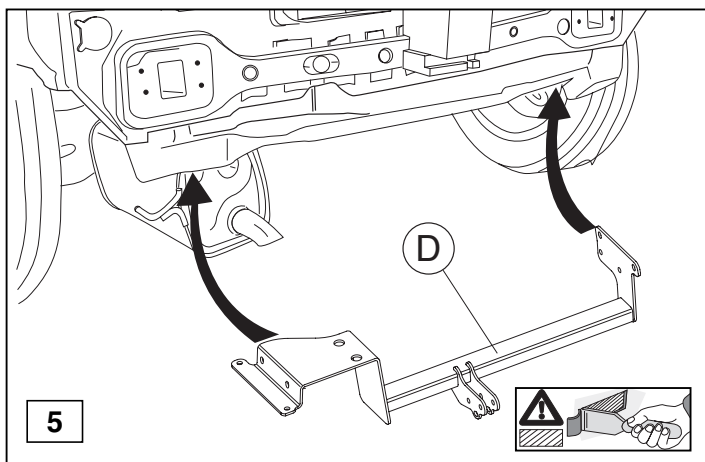
HINWEISE:

- * Die für das Fahrzeug zugelassene Anhängelast ist den Fahrzeug Unterlagen zu entnehmen. Bei Änderungen des Fahrzeuggewichtes muß die höchstzulässige Anhängelast gegebenenfalls aus dem D-Wert nachgerechnet werden.
- Auskunft hierüber kann Ihr Fachhändler oder der TÜV geben.
- * Elektrische Anlage gemäß StVZO anbringen.

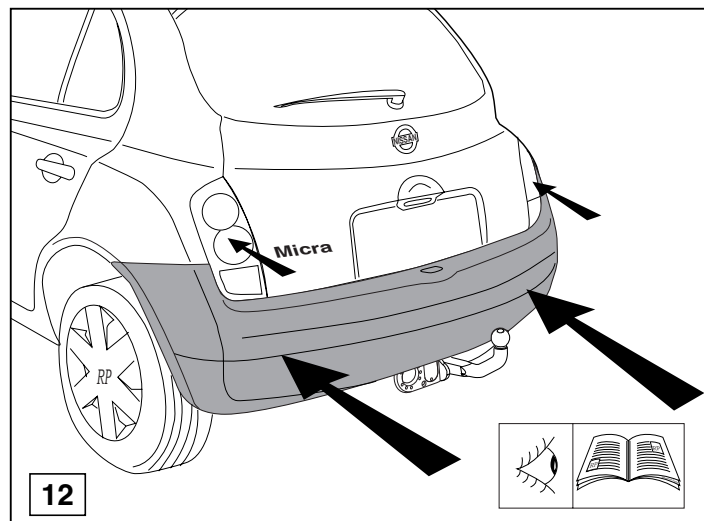
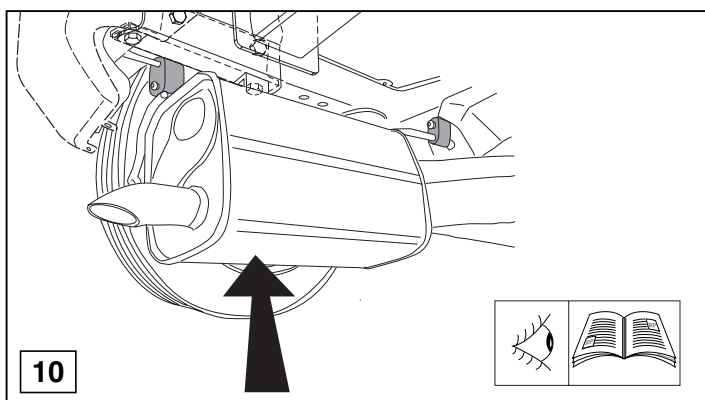
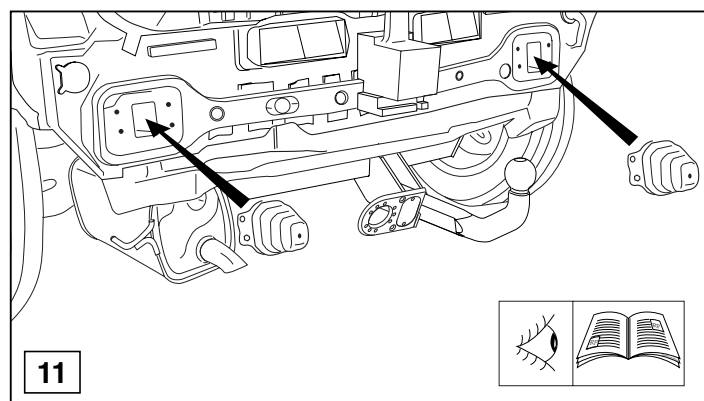
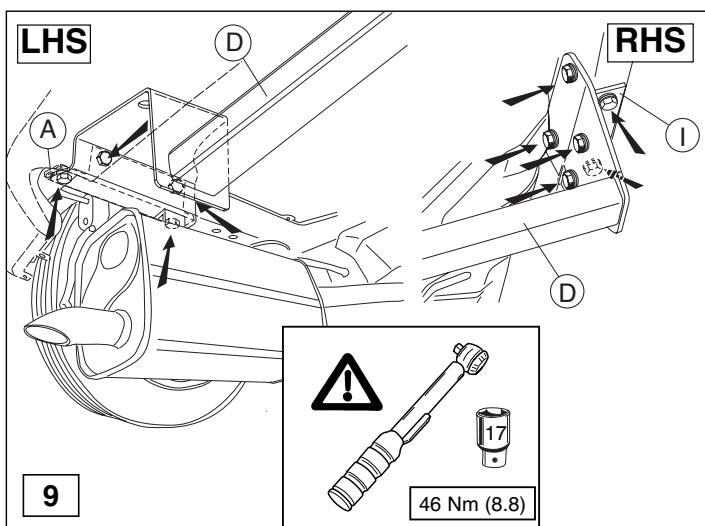


© 422370/27-06-2005/8





© 422370/27-06-2005/5



© 422370/27-06-2005/6